

SDA = Self-Development Academy Limited (www.tayosolagbade.com) – RC 492,204

SDAc's Excel-VB Driven Ration Formulator™

20th Jan 2013

For 7 extra
ingredients and
formula
storage/recall
see pages 19-20

This Custom Automated Excel VB
Entreprise Information System (EIS)
was developed by Tayo Solagbade for
SDA's Creative Business Solutions arm
(CB solutions) using MS Excel® &
Visual Basic for Applications.

CB Solutions help clients harness
Technology & The Internet to do what
they do with less effort, time and
MONEY thereby increasing their profits.

Our Excel Visual Basic applications are
FULLY customisable and applicable to a
wide variety of uses - this package
being just one of many examples.

What do you do with MS Excel that you
wish you could do quicker and more
accurately? Email/tell us today via
cbs@spontaneousdevelopment.com.

Paid License Owner is:

**<personal details of paid
user will be put here>**

User Quick Start Guide.

SDAc's Excel-VB Driven Ration Formulator for Yakub Ibrahim

Maize	Variable	55.35	Tgt Pr+(%)	25	PRMIX	Fixed	0.6
GNC S	Variable	22.61	Tgt Feed(kg)	200	Salt	Fixed	1.92
FM DNS	Variable	11.652	Refresh	Save		Fixed	
W/O	Variable	1.72	Print Preview Page			Fixed	
SBM	Variable	5.652	Picture Type			Fixed	
B/M	Fixed	0.5	Metafile			Fixed	

Choose CP Sources

Source Name	Ratio	Amount
GNC S	1	0.43
FM DNS	4	2.88
SBM	1	0.328

Pearson Square Inputs

Variable No. 1: Maize Variable No. 2: Mixture

Estimated % To Use In Ration

The quantity of Maize	65.46	Quantity of SBM will be	5.252
The quantity of Mixture	31.51	The quantity of Fixed Ingredients	3.02
Quantity of GNC S will be	5.252	Total %	100
Quantity of FM DNS will be	21.00		

SN	Ingredient Names	% In Ration	Price/Unit (Kg)	Pr% in ration	Amount(Kg)	kcal ME/g in Std=50kg	Type	Calcium In Ration	Fibre% In Ration	Ingredients Cost(Naira)
1	Maize	55.35	65.00	4.98	110.70	1854.23	Variable	0.01	1.22	7,195.50
2	GNC S	22.61	70.00	9.72	45.22	596.90	Variable	0.05	0.86	3,165.40
3	FM DNS	11.652	500.00	8.39	23.30	333.25	Variable	0.71	0.12	11,652.00

Note: 1 bag = 50kg

TABLE OF CONTENTS

This document explains how the various features in this application work AND how to use them. It is imperative that you take out time to study this guide document in detail, and PRACTICE using the various tools/features described. Just like any other application, if you do not spend time to LEARN/UNDERSTAND how to use the application, you are likely to experience frequent difficulties with it. Note also that since this is the first version, we continue working on improving it's functions and features – and hope you'll contribute to this process.

A. Before You Start

- .1 [System requirements for using the Automated Excel VB Spreadsheet Application.](#)
- .2 [Preparing your copy of MS Excel to run the application](#)
- .3 [Opening/running the application for the first time in your copy of MS Excel](#)
See page 6 – Did You Get A “Macros Are Disabled” Error Message?
- .4 [Tips for solving common problems during first-time use of the application](#)
- .5 [Disclaimer](#)

B. Getting To Know The User Interface/Using The Program(Screenshots Quick-Tutorial)

- .1 [Screenshot 0: MACROS DISABLED?](#)
- .2 [Screenshot 1: Call-Up/Login interface](#)
- .3 [Screenshot 2: Welcome Message Prompt](#)
- .4 [Screenshot 3: Main Menu Interface](#)
- .5 [Screenshot 4: Updating the Feed Ingredients Database](#)
- .6 [Screenshot 5: Opening the Ration Formula computation Interface](#)
- .7 [Screenshot 5A: PEARSON SQUARE COMPUTATION via the automated form](#)
- .8 [Screenshot 5B: Using The Computation Table To Formulate Ration via the automated form](#)
- .9 [Printing your ration formulation page](#)
- .10 [Saving your changes and logging off](#)

C. Important Notes

- .1 [What NOT to do while using the application](#)
- .2 [What NOT to do when a command button is executing a procedure](#)
- .3 [What TO DO whenever you use the application](#)
- .4 [Troubleshooting tips - Questions and Answers](#)

Before Using The Application

A. Before You Start

0.1 System requirements for using the Automated Excel VB Spreadsheet Application.

NOTE! For this program to run properly you need the following:

- a. The full Excel Visual Basic module installed in your copy of your Excel application. Also, please check and ensure the copy of MS Excel you want to use has the "Analysis ToolPak" and "Analysis ToolPak – VBA" add-ins installed. This is to enable certain spreadsheet functions used in the application perform needed calculations. *On the Excel Main Menu, click "Tools, Add-Ins..." and confirm the check boxes for are checked. If they are not, click on them to do so.* You may need to insert the MS Office installation disk in the CD drive for this to work.
- b. We strongly recommend that the application itself be located in the "pcm" folder in which we deliver it to clients - AND that folder, we recommend be located in the root (C:\) of your PC's hard drive. This is the only way to ensure optimal performance at all times. *In particular it will ensure you do not experience any difficulties locating the worksheets you create using the EXPORT command button in the application.*
- c. Your system should have minimum 256 MB RAM/20GB HD - or something close. Note that 512 MB RAM would afford better performance over time, as this application will grow in size/data volume processing requirements as data is progressively added over 12 months.
- d. This program was built using MS Excel 2003® . We advise that you run it using the same or higher version - though we are certain, from tests we've done, that most of the features are unlikely to malfunction in MS Excel 2002, *but not lower.*

0.2 Preparing your copy of MS Excel to run the application

If you fail to read and follow the instructions below you may find that our application will fail to run on the PC you select. Also, note that these instructions MUST be applied EVERY TIME you wish to use the Automated Ration Formulator™ on a PC that you have not used for that purpose previously.

- a. Copy the program's "rationformulator" folder WITH it's entire contents – as delivered to you - to your PC's hard drive root(e.g. "C:\").
- b. Note that if you downloaded the application from our website, then the folder would have come in a zipped format (.zip extension) to you. In such a case, you will need to use WinZip or any other suitable file compression software to unzip the folder BEFORE you copy it to the earlier specified location on your PC hard drive.

0.3 Opening/running the application for the first time in your copy of MS Excel

The Automated Ration Formulator™ application was created using MS Excel Visual Basic, and therefore requires that MS Excel's Macro Security Setting be set to allow macros to run normally on it.

Except you already use other workbooks that require macros to be enabled, the Default Macro security setting in your copy of Excel is likely to be minimum of "High" which will cause applications like ours to be automatically disabled.

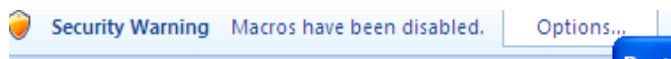
You will therefore need to use the following procedure to enable the macro:

- Close the file and any other instances of the application currently running on the computer (this may include closing any applications using portions of the application you are currently running, such as Outlook which can use Word, database applications, and others).
- Select the Tools menu option and then select Macro and Security. In the resulting Security dialog, set the security level to Medium by clicking the Medium radio button. Close the file and any other instances of the application currently running on the computer.
- Open the Automated Ration Formulator™ application again and click the Enable button when prompted to allow for the unsigned macro to run.

NOTE: In the event that you do purchase any of our applications, you may want to set the security level to "Low" by clicking the "Low" radio button. This will eliminate the need to answer the "Enable/Disable Macros" prompt every time you open the application. Keep in mind however that this should only be done if you are sure adequate anti-virus protection exists on your PC as other macros-driven applications (from other sites you might patronize) could pose virus-attack threats.

c) When you have accepted the macro, return the macro security level to High. See [Troubleshooting tips - Questions and Answers](#) on page 15.

IMPORTANT: In EXCEL 2007 upwards, click the OPTIONS button above the worksheet, then click the “Enable this content” radio button in the dialog box that appears.

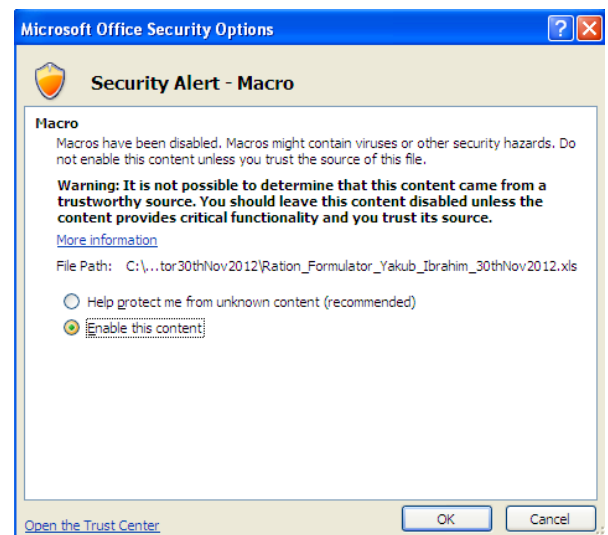


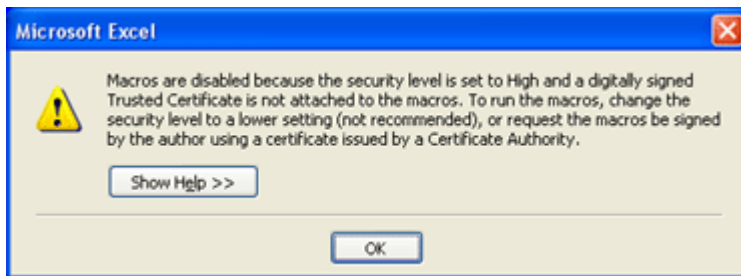
Paid License Owner is:

<personal details of paid user will be put here>

0.4 Disclaimer

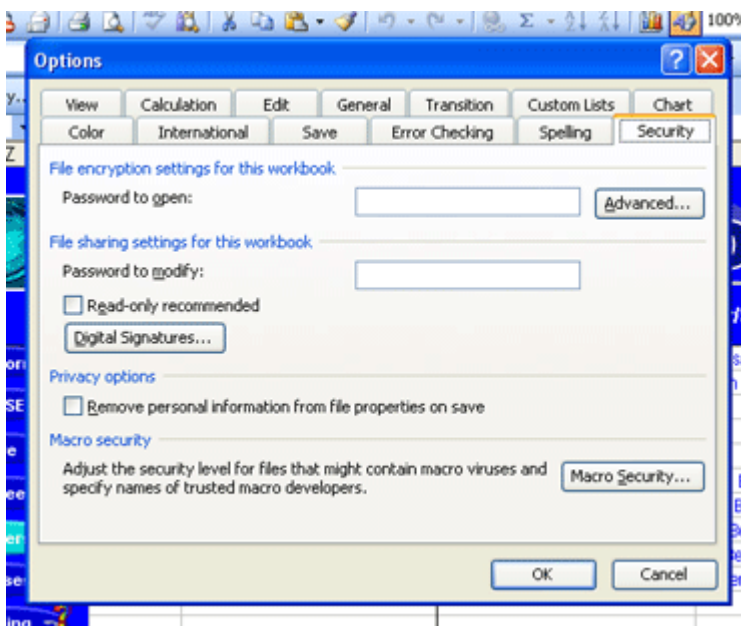
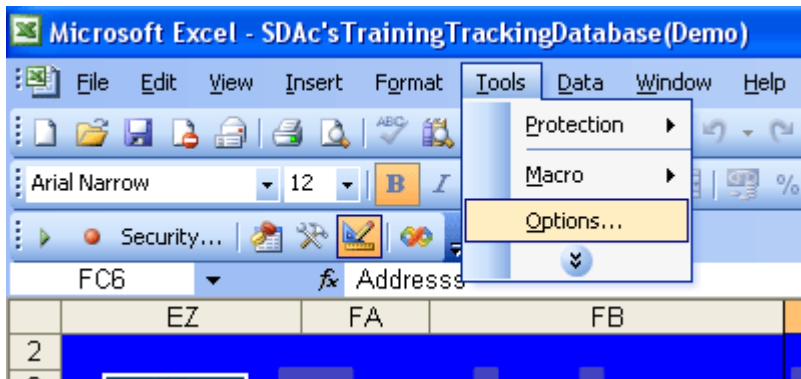
This Software Is Provided For Evaluation Only, On An "As Is" Basis. The Author* Disclaims All Warranties Relating To This Software, Whether Expressed Or Implied, Including But Not Limited To Any Implied Warranties Of Merchantability Or Fitness For A Particular Purpose. The Author* Shall Not Be Liable For Any Indirect, Consequential, Or Incidental Damages Arising Out Of The Use Or Inability To Use Such Software, Even If The Author Has Been Advised Of The Possibility Of Such Damages Or Claims. The Person Using The Software Bears All Risk As To The Quality And Performance Of The Software. Although Every Effort Has Been Made To Ensure The Accuracy Of This Program, Users Should Verify The Results For Themselves. *The Author Is Tayo Solagbade (234-803-302-1263 or email: tayo@tayosolagbade.com)





MACROS DISABLED?

If you get the message on the left when you try to open this Excel workbook in your PC's copy of MS Excel, follow the instructions below.



A QUICK SOLUTION:

Default Macro security setting in your copy of Excel is likely to be minimum of "High" which will cause applications like ours to be automatically disabled. You can use the following procedure to enable the macro:

Click the OK button on the message box announcing 'Macros are disabled ...etc'

a) On the main Excel menu, click **Tools** – **Options**. A dialog box will appear (see left)

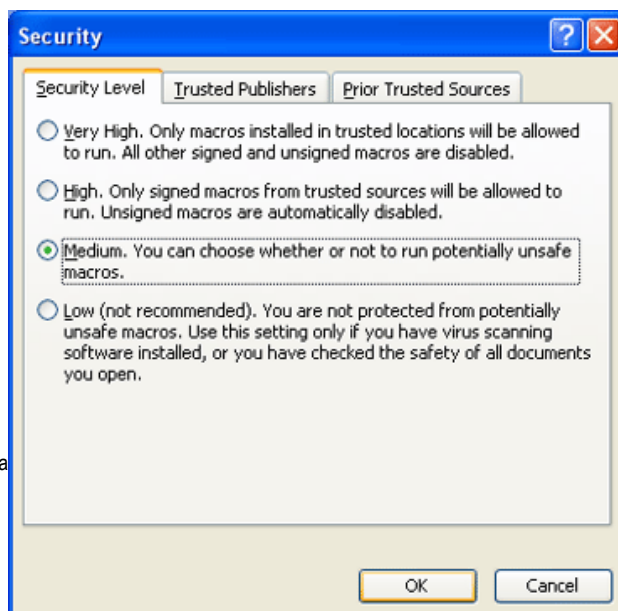
b) Click the **Security** tab on that **Options** dialog box and then click **Macro Security...** (A Security Dialog box showing High, Medium & Low radio button options will appear).

c) In the resulting Security dialog, set the security level to **Medium** by clicking the Medium radio button. (See pic on the left) and click OK.

d) Next close the file/any other instances of the application running on the computer.

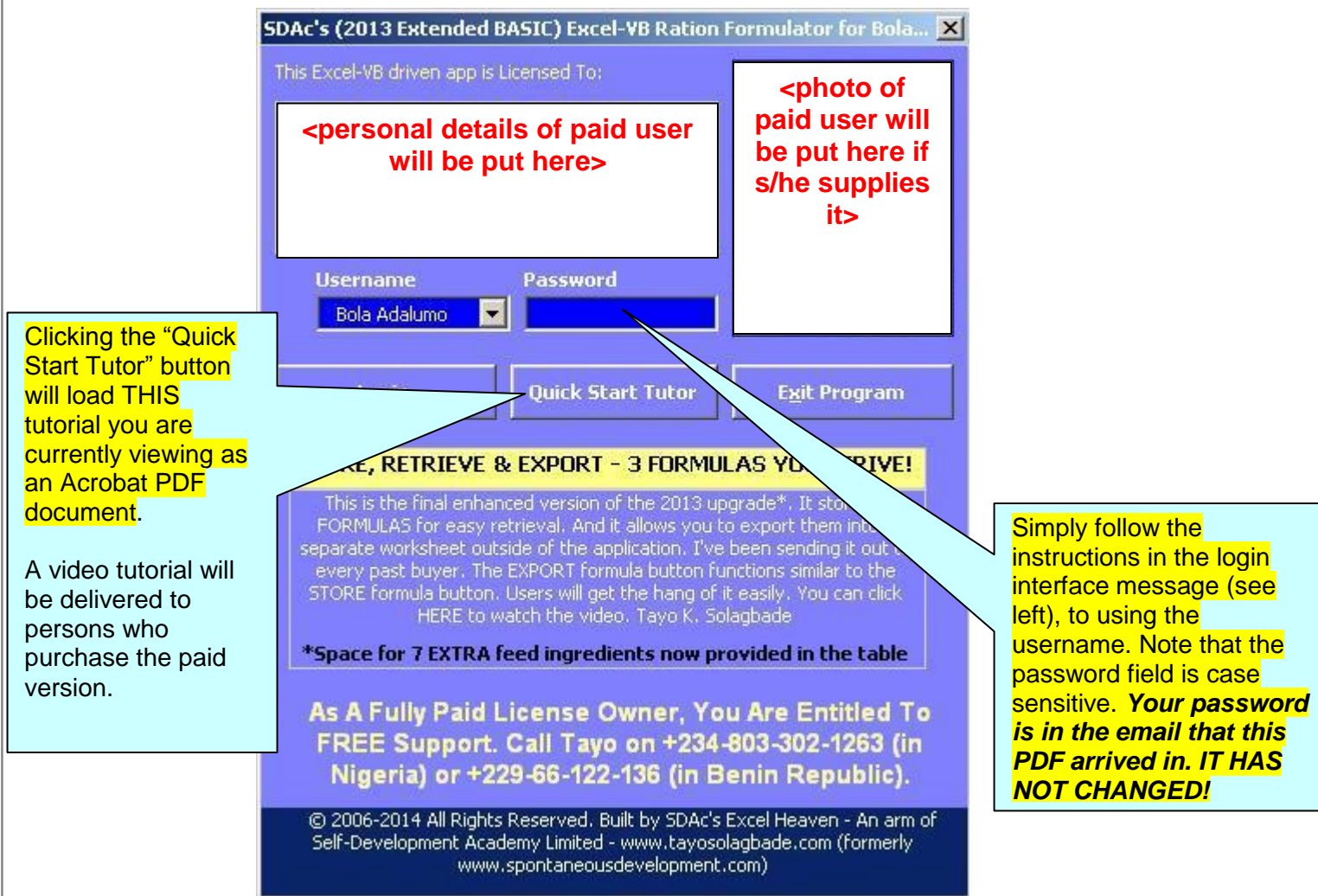
e) Now, open the file again and click the **Enable Macros** button on the dialog box that appears to allow for the unsigned macro to run.

In EXCEL 2007 upwards, click the **OPTIONS** button above the worksheet (see screenshot on page 4 above), then click the "Enable this content" radio button in the dialog box that appears.



Getting To Know The User Interface/Using The Program

Screenshot 1: Call-Up/Login interface that appears after the above steps are completed and the workbook program has been opened. Follow the instructions for logging into it.



(Note that I have built in this login interface because this program holds sensitive contact information which the user would not want to be easily accessed by just about anyone who comes across the workbook on the PC).

Screenshot 2: This **welcome message** prompt appears after you successfully login using your username and password. Click OK to continue.

Screenshot 3: This **Main Menu Interface** appears after you click OK on the message box prompt that appears in Screenshot 2. This menu provides clickable command buttons/active Controls and hyperlinks for the user to gain access to any part of the application.

Manager Users: Click this button bring up the **Manager Users** custom form that can be used to add/remove/modify usernames or passwords etc. Available in Paid Versions.

Logout: Click this button to logout of the application. A prompt will ask you to confirm you have saved your last changes, to which you will respond, after which logout will be completed. Clicking the “Exit Program” button on the Login interface that appears will close the program.

Screenshot 3: Main Menu Interface

Click **Use Ration Formulator**, to go to the **Ration Formulation** spreadsheet. There you will see the button labeled “Automated Ration Formular” atop the spreadsheet. See page 13 for more instructions.

Error Log: Click this button to record ANY error or problem you encounter while using this program. A user-friendly entry form will appear. You will be prompted to export and upload to our website the log sheet you generate, so we can be informed about the problems you are having. Follow the instructions that appear

BACKUP PROGRAM(Available In Paid Versions)

Click on the above “Backup Program” button on the main menu to execute the automated workbook backup procedure as follows:

- 1). A warning/confirmation prompt appears after you click the button. The message is self-explanatory.
- 2). If you click YES to continue backup the program will create 2 backup files and then prompt you that this is done, giving also the location of the files.
- 3). You will then click OK to allow the program complete the return to Normal Save mode.

It is important that you make a habit of transferring your backup files from your PC hard drive on to a removable storage medium so as to be sure you have another set of backup copies should a problem occur with your hard drive – which is a real possibility with all electronic devices.

Getting HELP with THE F1 Key

Pressing the F1 key anywhere in the application will load THIS Quick Start Screenshot Tutorial.

That means if you need to refer to this guide document while working in the application, simply press F1. Note however that if a form is active when you do this, pressing F1 may not produce the desired result. In such a case, you will click the close button (marked X) for the form to close the form BEFORE pressing F1.

USER AUTHORISATION

Only authorized users will be able to successfully click on the “Manage User(s)” button in the Main Menu Interface.

If a user who has not been added to the authorized user list clicks on either of the above mentioned button while logged in, s/he will get a “**You do not have authorization to use this feature**” message.

Only an authorized user will be able to assign/modify user authorisation/login rights from within the “Manage Users” interface.

Screenshot 4: On the main menu, clicking the “Upgrade Feed Ingredients” button takes you to the **Feed Ingredients Database interface** shown below.

Feed Ingredients	Crude Pr+	Methionine(mg/g)	Lysine(mg/g)	Energy(Kcal/g)	Calcium%	Phosphorous%	Fibre%	Ratio	Price/Kg
Wheat Offals	17			1.9			5		0.3
Oyster Shell	0				39				0.6
Bone Meal (BM)	12				26				1.1
Vit/Min mix	0								68
Salt	0								2.5
SoyaBean Meal (SBM)	44			2.23				3	15
Brewer's Dried Grains (BDG)	22			1.9		12			1.1
Palm Oil	0			9					10
Maize Bran		156	94						1
Palm Kerner Cake		144							
Rice Bran	16	233		1.8					
Corn Offal	12			1.9					
Mixture	48.2								
Hulless Oats	12.6	6200	5000	3.6	0.0796	0.342	2.5		
Oats	9.1		4000	3.4			12.1		
Wheat	11	4300	3400	3.9			2.9		
Rye	12	1350	4020	3.33			2.5		
Buckwheat	10	800	580	4.3			15		
Barley	11	3230	4360	3.7			3.3		
Peas	23	280	1670			0.39	5.5		
Cratomucosus									
Layer Premix						4			
Sheep Minera Ovation 18/6						6			
More a Chab 36%									
Cat food 40%	40				1	0.8	2.5		
Maize	9	191	141	34			9		0.8

No price per kg for peas & catfood?

This is where you enter YOUR own estimates of nutrient composition, energy content, usage ratios and price per kilogram (kg) for EACH listed feed ingredient.

Simply click in the cell you want, and type. Each item's parameters are on its row, continuing to the rightmost labeled column of the table.

Of course, you can add more feed ingredients or change the names of those currently listed. Note that whatever items you enter here will automatically appear in the menus used in the ration formulation interface.

The software automatically uses the data entered here in computation for each ingredient you select in the Computation Table. This includes the price per kg of each feed ingredient you use. It is what you put in here that determines what the software will return in the computation. So, PLEASE ensure you check and ascertain that you make NO ERRORS here before using the software to generate your ration.

From the next page, I provide step-by-step instructions for copying your list of ingredients and their corresponding prices and nutrient values into the software's nutrient table shown above.

IMPORTANT NOTE: This is a NEW – and more detailed - version of the PDF user guide for the Ration Formulator. It has had its nutrients table updated with feed ingredients prices and % nutrient analysis data sent me by **Yakub Ibrahim** (a past buyer) towards preparing a special tutorial for his use. So, you will find periodic references to his name. Other than that, the information provided will guide you to use the app correctly.

Screenshot 4a: Opening your MS Word list of feed ingredients

Note: Yakub, ensure that you have already opened the software to the Feed Ingredients Database table interface, before you carry out the instructions that appear below:

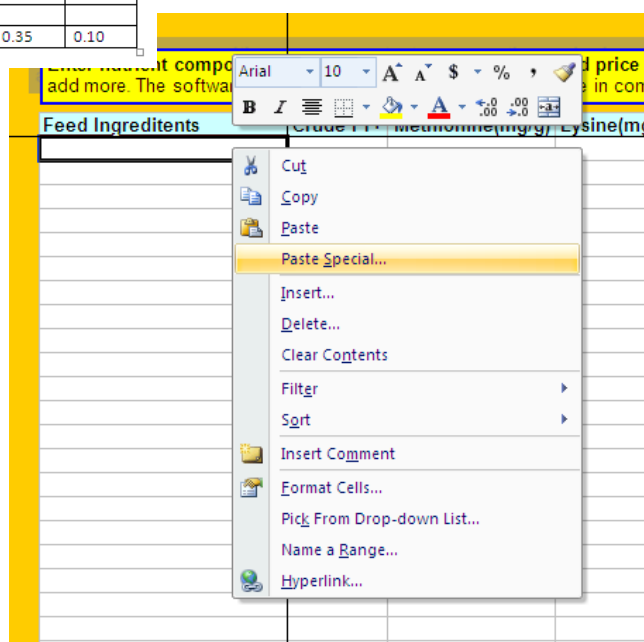
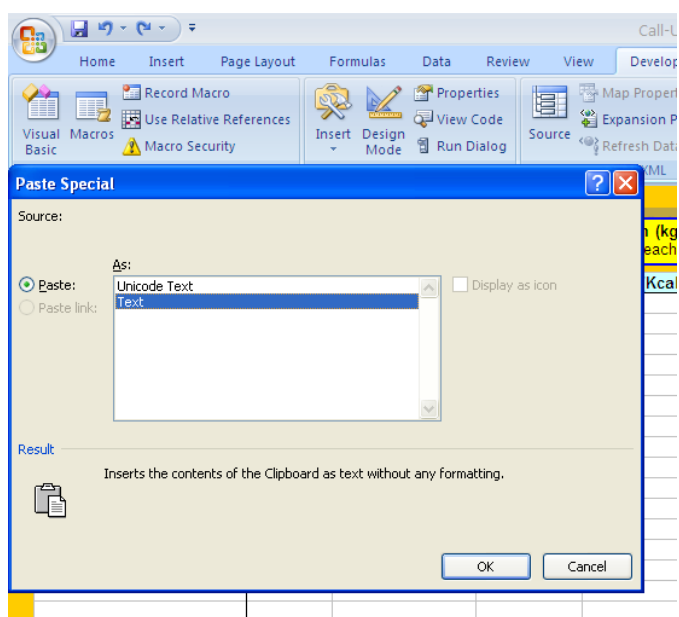
ITEM	PRR ICE	ENERG Y	PROTEIN	FAT	FIBER	CALCIUM	PHOSPR	ASH	LYSIN	METH
MAIZE	65	3350	9.00	4.00	2.20	0.02	0.10	-----	0.26	0.18
GNC S	70	2640	43.0	9.01	3.81	0.20	0.20	4.00	-----	0.48
GNC B	70	2700	42.1	8.52	3.81	0.20				
SBM	130	2240	32.81	3.50	4.07	0.20	0.60	-----	2.80	0.59
SBC					4.56			7.41		
SOYA					5.50	0.25	0.58		2.25	0.58
MZB					9.00					
CN B					7.00					
W/O										
B/M					----	24.0	16.0			
FM D					1.00	6.10	3.00		5.00	3.50
FM L					1.00	4.50			4.60	2.80
L/STC					33.0					
PKC					10.59			4.36		
R/BR					14.0	0.06	1.90	8.77		
R/BR					18.84	0.07	1.10			
WHEA										
PRMI										
LYSIN										
METH	1300	5020	98.5							
ENZY						750	625		94.50	14.50
SALT										
G.CO					2.00	0.4	0.32		0.35	0.10

you will recognize your ingredients on the left. Once you open it up in MS Word, simply select the list of ingredients that you have under the ITEM column in the spreadsheet, by using your mouse to select from the top to the last item.

Then click on the highlighted area to open the shortcut menu (see above). Then click on the "Copy" option on the menu, to copy the list of items to the computer's clipboard.

You will now minimize this MS Word document's window, and maximize the MS Excel window, to return to the Feed Ingredients Database interface (see right).

Right click in the first cell directly below the heading for the "Feed Ingredients" column (see right). The shortcut menu will appear.



Select the "Text" item from the options listed in the "As;" field. Then click OK (See left).

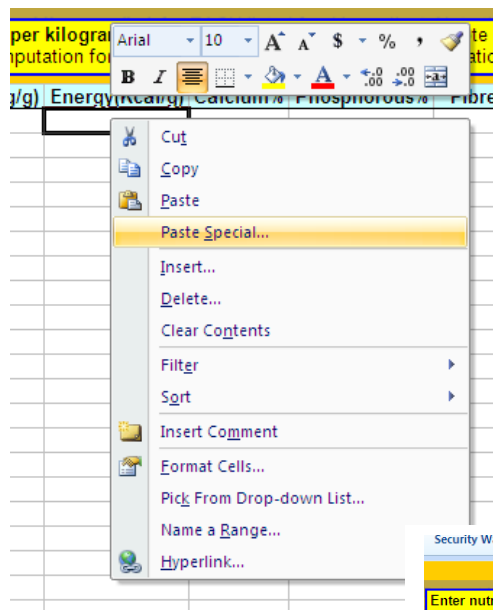
Once you complete the above steps the copied text from the MS Word "ITEM" list will be pasted in the selected column (see screenshot on next page).

Feed Ingredients	Crude Pr+
MAIZE	
GNC S	
GNC B	
SBM	
SBC	
SOYA F	
MZ BRN	
CN BRN	
W/O	
B/M	
FM DNS	
FM LCL	
L/STON	
PKC	
R/BRN.F	
R/BRN L	
WHEAT	
PRMIX	
LYSIN	
METH	
ENZYM	
SALT	
G CORN	

Above: The pasted list of ingredient names

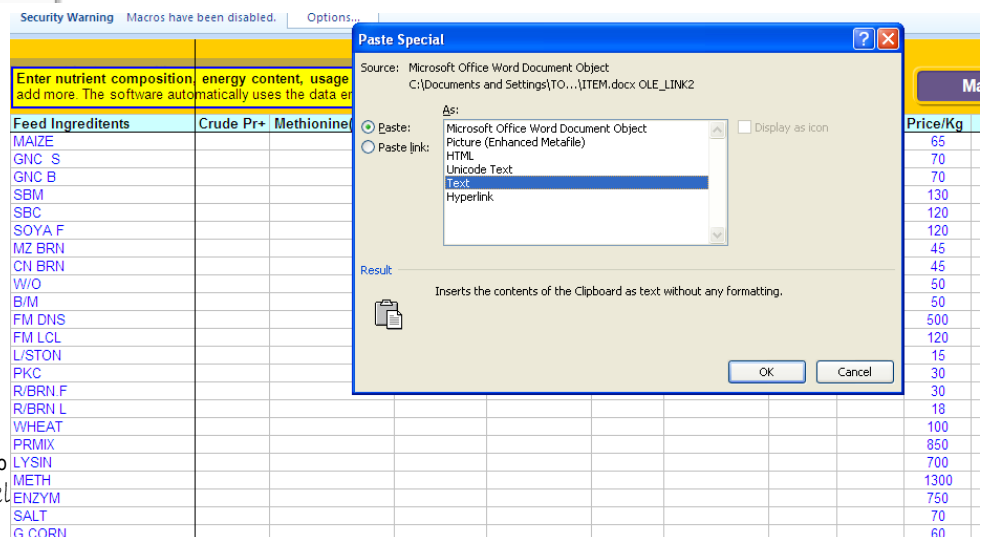
ITEM	PRR ICE	ENERG Y	PROTEIN	FAT	FIBER	CALCUL
MAIZE	65	3350	9.00	4.00	2.20	0.02
GNC S	70	2640				
GNC B	70	2700				
SBM	130	2240				
SBC	120	2500				
SOYA F	120	3300				
MZ BRN	45	2980				
CN BRN	45	3000				
W/O	50	1300				
B/M	50	----				
FM DNS	500	2860				
FM LCL	120	2550				
L/STON	15	-----				
PKC	30	2100				
R/BRN.F	30					
R/BRN L	18	2900				
WHEAT	100	2900				
PRMIX	850					
LYSIN	700	3990				
METH	1300	5020				
ENZYM	750	62000	1833	6.00		750
SALT	70					
G.CORN	60	3300	11.00	3.00	2.00	0.4

Above: In MS Word, I repeat the same process used to copy the list of ingredients names, now being used to copy the corresponding energy values for the copied ingredients.



Left: Clicking the “Paste Special...” menu option on the short cut menu that appears when you right-click in the “Energy” column’s FIRST cell in the software’s ingredients table.

Below: Choosing the “Text” menu option from the from the options listed in the “As;” field. Then click OK (See below). The same will be done for the “Price” column and others.



Screenshot 5: Clicking the **Use Ration Formulator** BUTTON, on the main menu takes you to the **Ration Formula computation Interface** shown below.

You can work manually using drop menus/cells on the spreadsheet below. Instructions are on the left column. However, it is better/advisable to use the automatic form to complete the process.

SN	Ingredient Names	% In Ration	Price/Unit (Kg)	Pr% in ration	Amount(Kg) Std=50kg	kcal ME/g in ration	Type	Calcium In Ration	Fibre% In Ration	Ingredients Cost(Naira) Note: 1 bag = 50kg
1	Maize	11.57	3.30	1.04	28.93	3.93	Variable	0.00	1.04	95.45
2	Peas	82.42	0.00	18.96	206.05	0.00	Variable	0.00	4.53	0.00
3	Hulless Oats		0.00	0.00	0.00	0.00	Variable	0.00	0.00	0.00
4	Wheat		0.00	0.00	0.00	0.00	Variable	0.00	0.00	0.00
5	Rye		0.00	0.00	0.00	0.00	Variable	0.00	0.00	0.00
6	Buckwheat		0.00	0.00	0.00	0.00	Variable	0.00	0.00	0.00
7	Barley		0.00	0.00	0.00	0.00	Variable	0.00	0.00	0.00
8	Cat food 40%	0.01	0.00	0.00	0.03	0.00	Fixed	0.00	0.00	0.00
9	Laver Premix	4	0.00	0.00	10.00	0.00	Fixed	0.00	0.00	0.00
10	Salt	0.5	2.50	0.00	1.25	0.00	Fixed	0.00	0.00	3.13
11	Oyster Shell	0.5	0.60	0.00	1.25	0.00	Fixed	0.20	0.00	0.75
12	Pierre à Chaux 38%	1	0.00	0.00	2.50	0.00	Fixed	0.00	0.00	0.00
		100		20.00	250.00	3.93	Kcal/g	0.20	5.57	99.33

	Amount	Ratio	Choose CP Sources
Total Variable Ingredients = 93.99 % - A			Peas
Total Fixed Ingredients = 6.01 % - B			
Total Fixed Ingredients Pr+ = 0.004 % - C			
Target Pr+ given as = 20			
Target Pr+ Minus "C" = 19.996			
<i>This amount of Pr+ is to be contributed by 93.99 % Variable Ingredients</i>			

If 93.99 % variable ingredients contribute 19.996 % CP, it implies:

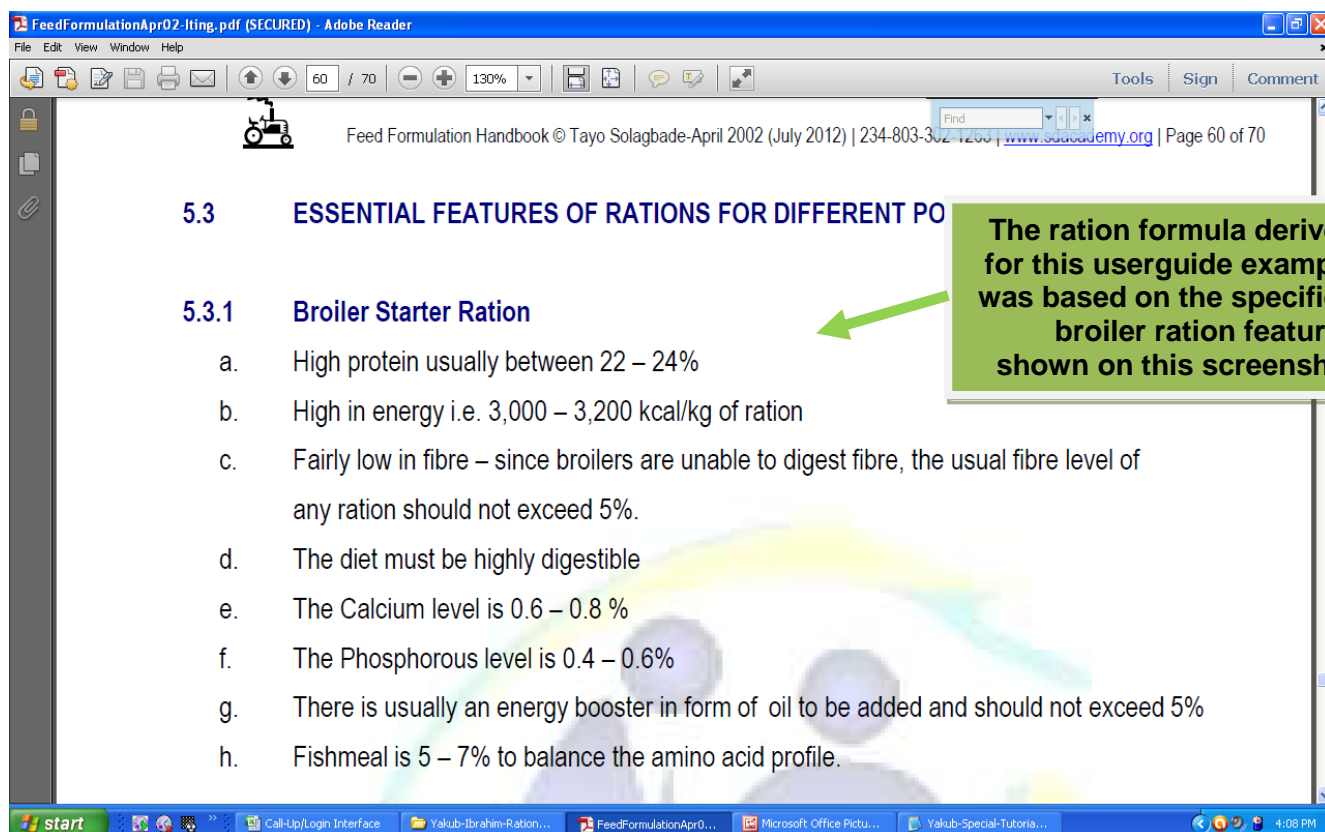
100% variable ingredients will contain/contribute:

$\frac{19.996}{93.99} \times 100$	=	21.27 % CP
-----------------------------------	---	------------

The instructions provided in this section have been deliberately prepared with reference to computing a **"Broiler Starter Ration formula"** based on features of broiler starter ration described on page 60 of my feed formulation handbook (See essential features of rations for different poultry groups on page 60 to 62 in the handbook).

A screenshot of the handbook's page 60 is shown on the next page i.e. page 12.

So, you may wish to refer to the broiler starter features screenshot as you study/follow the steps described next.



The copy of the software that I've sent to you with THIS new PDF guide has had its nutrients table updated with feed ingredients prices and % nutrient analysis data sent me by **Yakub Ibrahim**, towards preparing a special tutorial for his use.

In this user guide example, the ration computation table in the software will return values close to those specified as required for the Broiler Starter Ration features shown in the screenshot above.

Note that you will have cause - in using the software to - "try" using variable values for feed ingredients, until the Pr+ value, Energy level and other important parameters for your feed turn out the way you want them.

Recall that you need a SOUND understanding of feed formulation principles (such as those described in the feed formulation handbook) to make effective use of this software.

The common saying - Garbage-In Garbage Out – in relation to computers applies firmly here!

Screenshot 5A: PEARSON SQUARE COMPUTATION – Using the automated form

You need to do this FIRST (i.e. the Pearson Square) to determine VARIABLE COMPONENTS to use in the Feed. Examples are Maize, Groundnut Cake, Fish Meal etc.

Drop menus provided on the form allow you to choose the ones you want (see Pearson Square Inputs section in screenshot below).

You will notice – under the “Choose CP (Crude Protein) Sources” that multiple KEY protein contributors (GNC S, FM DNS and SBM) have been selected. This means you will need to choose “mixture” in the drop menu in your Pearson Square Inputs section (see below).

See Also Screenshot Guide**On Page 16**

At “A”: Type target protein value you want in the final feed into “Tgt Pr+(%)”.

Below it, enter total kg of feed you want to make.

At “B”: Use the drop menus to choose the crude protein sources you want to use. If you choose more than ONE CP source, you MUST choose “Mixture” at “C” in “Variable No. 2” under **Pearson Square Inputs**

Once the above is done, click the **REFRESH** button. The software will generate values for in the “Estimated % To Use In Ration” section (below section “C”).

At “D”: You will now enter the generated values into the data entry fields for EACH ingredient at “D”. Then finish by clicking REFRESH to generate the ration formula.

- 1: Click the button labeled “Automated Ration Formular” atop the spreadsheet.
- 2: When you do this, the automated form will appear – see screenshot on page 16.
3. Next, you specify the target protein content of the ration you want to formulate by entering in into the field so labeled (**Target Pr+ %**) – see screenshot on page 16.
4. Then you will enter the target amount (kg) of the livestock feed you want to formulate by entering in into the field so labeled (**Target Feed Kg**) – see screenshot on page 16.
5. Now go to the **Pearson Square Input section** and choose the feed ingredients you want to use from the drop menus provided - see screenshot on page 16.
6. Next, you will click the “Refresh” button to have the program compute the required quantities of each of the ingredients.

7. The required quantities will appear in the Pearson Square Input section under “**Estimated % to use in Ration**” - see screenshot on page 16.

Screenshot 5B: Using The Computation Table To Formulate The Ration

SDAc's Excel-VB Driven Ration Formulator for R. Vaughan

Maize Variable 11.57 **Tgt Pr+(%)** 20 **Barley** Variable **Tgt Feed(kg)** 250

Peas Variable 82.42 **Refresh** **Save** **Cat food 40%** Fixed 0.01

Hulless Oats Fixed **Print Preview Page** **Layer Premix** Fixed 4

Wheat Variable **Picture Type** **Salt** Fixed 0.5

Rye Variable **Metafile** **Oyster Shell** Fixed 0.5

Buckwheat Variable **Pierre à Chau** Fixed

Choose CP Sources **Pearson Square Inputs** Variable No. 1 Maize Variable No. 2 Peas

Source Name **Ratio** **Amnt**

Peas

Estimated % To Use In Ration

The quantity of Maize **11.58** The quantity of Fixed Ingredients **6.01**

The quantity of Peas **82.40** **Total %** **100**

0

SN	Ingredient Names	% In Ration	Price/Unit (Kg)	Pr% in ration	Amount(Kg) Std=50kg	kcal ME/g in ration	Type	Calcium In Ration	Fibre% In Ration	Ingredients Cost(Naira) Note: 1 bag = 50kg
1	Maize	11.57	3.30	1.04	28.93	3.93	Variable	0.00	1.04	95.45
2	Peas	82.42	0.00	18.96	206.05	0.00	Variable	0.00	4.53	0.00
3	Hulless Oats		0.00	0.00	0.00	0.00	Fixed	0.00	0.00	0.00
4	Wheat		0.00	0.00	0.00	0.00	Variable	0.00	0.00	0.00
5	Rye		0.00	0.00	0.00	0.00	Variable	0.00	0.00	0.00
6	Buckwheat		0.00	0.00	0.00	0.00	Variable	0.00	0.00	0.00
7	Barley		0.00	0.00	0.00	0.00	Variable	0.00	0.00	0.00
8	Cat food 40%	0.01	0.00	0.00	0.03	0.00	Fixed	0.00	0.00	0.00
9	Layer Premix	4	0.00	0.00	10.00	0.00	Fixed	0.00	0.00	0.00
10	Salt	0.5	2.50	0.00	1.25	0.00	Fixed	0.00	0.00	3.13
11	Oyster Shell	0.5	0.60	0.00	1.25	0.00	Fixed	0.20	0.00	0.75
12	Pierre à Chau 38%	1	0.00	0.00	2.50	0.00	Fixed	0.00	0.00	0.00
		100		20.00	250.00	3.93	Kcal/g	0.20	5.57	99.33

No price per kg for peas & catfood?

8. Move upwards to the computation table on the automated form. You will now enter the % figures for each ingredient into the corresponding field for it – see oval circles in screenshot on page 16. **Then finish by clicking the REFRESH button to generate the ration formula.**

9. Be sure to check and confirm the fixed ingredient quantities to be as desired. Change any that are not. ***Remember to check that your totals at the bottom of the computation table add up correctly.***

For instance the **total protein** (should be approx. target Pr+), **% in ration** (should be approx 100), **kcal ME/g in ration** (should be within the desired range for your animals), **Amount (Kg)** – should add up to your desired target feed size), **Calcium In Ration** (should be within

desired range for your animals), **Fibre % In Ration** (should be within desired range for your animals).

Finally, on the extreme right end of the computation table is **Ingredients Cost (Naira)** – the total value for this you will **check and compare to your budget**. If it is not okay, you will have to make adjustments to your ingredients – possibly using cheaper alternatives via substitution, for instance, as is described on page 26 of the feed formulation handbook.

Your purpose will be to vary the ingredients used in a way that brings down your total cost, while keeping your feed nutrient indicators within the desired limits.

IMPORTANT NOTES:

Just as is the case when doing manual feed formulation computation, when using this spreadsheet automated ration formulator, you **MUST** keep the following rules in mind.

- 1. Two ingredients whose individual CP content are less than the desired level (or target) for the ration, are NEVER used.** At least one of the sources of nutrients must have its protein level above the target level for the ration.
- 2. Plant proteins are always mixed in with animal protein sources to meet the Amino acid balance** (e.g. GNC + FM + BLM must go into mixture in the ration at a ratio of 4:1:1)
- 3. In a situation where 2 ingredients contain the same proportion of CP, one has to decide on the ratio of the ingredients to use** (e.g. 4:1 for GNC and FM)
- 4. When the CP sources are more than ONE it is the % of mixtures that has to be used.**

Screenshot 6: Using the auto form

Use the drop menus on these sections to choose the feed ingredient you wish to use in your ration – and specify if **fixed or variable**.

You can work manually using drop menus/cells on the spreadsheet itself. Instructions are on the left column. Click this **RED** button (X) to close the form.

SDAc's Excel-VB Driven Ration Formula for R. Vaughan

Maize Variable 11.57 **Tgt Pr + (%)** 20 **Barley** Variable **Tgt Feed(kg)** 250

Peas Variable 82.42 **Refresh** **Save** **Cat food 40%** Fixed 0.01

Hulless Oats Fixed **Print Preview Page** **Layer Premix** Fixed 4

Wheat Variable **Picture Type** **Salt** Fixed 0.5

Rye Variable **Metafile** **Oyster Shell** Fixed 0.5

Buckwheat Variable **Pierre à Chau** Fixed 1

Choose CP Sources **Pearson Square Inputs** Variable No. 1 Maize Variable No. 2 Peas

Estimated % To Use In Ration

The quantity of Maize 11.58 The quantity of Fixed Ingredients 0

The quantity of Peas 82.40 The quantity of Fixed Ingredients 6.01

0 Total % 100

SN	Ingredient Names	% In Ration	Price/Unit (Kg)	Pr% in ration	Amount(Kg) Std=50kg	kcal ME/g in ration	Type	Calcium In Ration	Fibre% In Ration	Ingredients Cost(Naira) Note: 1 bag = 50kg
1	Maize	11.57	3.30	1.04	28.93	3.93	Variable	0.00	1.04	95.45
2	Peas	82.42	0.00	18.96	206.05	0.00	Variable	0.00	4.53	0.00
3	Hulless Oats		0.00	0.00	0.00	0.00	Fixed	0.00	0.00	0.00
4	Wheat		0.00	0.00	0.00	0.00	Variable	0.00	0.00	0.00
5	Rye		0.00	0.00	0.00	0.00	Variable	0.00	0.00	0.00
6	Buckwheat		0.00	0.00	0.00	0.00	Variable	0.00	0.00	0.00
7	Barley		0.00	0.00	0.00	0.00	Variable	0.00	0.00	0.00
8	Cat food 40%	0.01	0.00	0.00	0.03	0.00	Fixed	0.00	0.00	0.00
9	Layer Premix	4	0.00	0.00	10.00	0.00	Fixed	0.00	0.00	0.00
10	Salt	0.5	2.50	0.00	1.25	0.00	Fixed	0.00	0.00	3.13
11	Oyster Shell	0.5	0.60	0.00	1.25	0.00	Fixed	0.20	0.00	0.75
12	Pierre à Chau 38%	1	0.00	0.00	2.50	0.00	Fixed	0.00	0.00	0.00
		100		20.00	250.00	3.93	Kcal/g	0.20	5.57	99.33

No price per ka ?

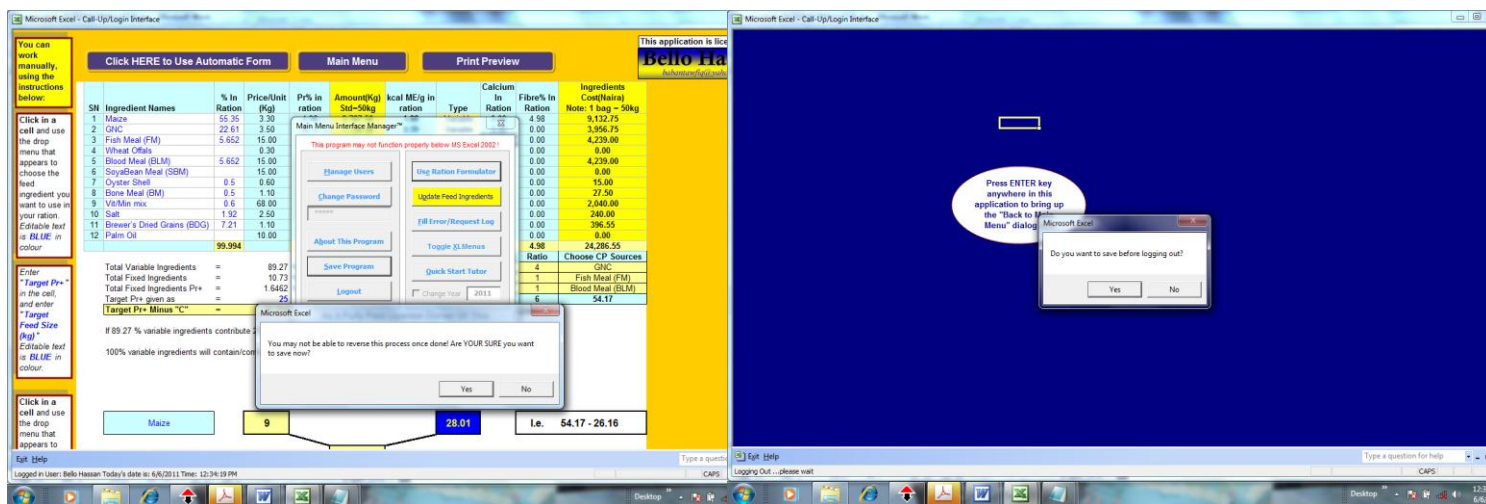
Enter the results (i.e. % of each ingredient to use in the ration) generated by the **Pearson Square Inputs** section (see above) and click the **"Refresh"** button. This will update the ration computation table. **See the Pearson square preview printout on page 17.**

Please NOTE that successful use of this application can only be made if the user has read and understood the Pearson Square computation technique/ other ration formulation principles described in the accompanying Feed Formulation Handbook. You need to also keep in mind the RULES that guide selection and use of ingredients. The software automates the process, BUT it cannot make the intellectual decisions humans should make. Call +229-66-122-136 if you need help. Or email tayo@tksola.com

Simply click the button labeled “Print Preview Page” on the automated form, and the page will be opened in MS Excel’s preview window – see below. Check that your report looks okay, then click the “Print” button in menu bar at the top of the window, and use the dialog box that appears to send the page to printer.



Pressing ENTER ANYWHERE in the application brings up a YES/NO prompt that loads the main menu if you click YES. On the main menu, click **Save Program** button and follow the prompts that appear. ***You can also use “Ctrl+S” shortcut on your keyboard to save your changes.*** Watch the status bar till the “Saving....wait” prompt changes to “Ready”. Click the “Logout” button and follow the prompts that appear, to logout.



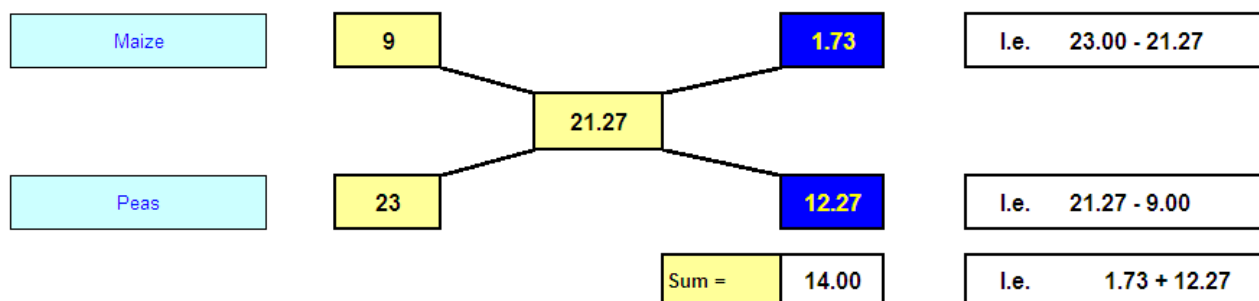
SN	Ingredient Names	% In Ration	Price/Unit (Kg)	Pr% in ration	Amount(Kg) Std=50kg	kcal ME/g in ration	Type	Calcium In Ration	Fibre% In Ration	Ingredients Cost(Naira) Note: 1 bag = 50kg
1	Maize	11.57	3.30	1.04	28.93	3.93	Variable	0.00	1.04	95.45
2	Peas	82.42	0.00	18.96	206.05	0.00	Variable	0.00	4.53	0.00
3	Hulless Oats		0.00	0.00	0.00	0.00	Variable	0.00	0.00	0.00
4	Wheat		0.00	0.00	0.00	0.00	Variable	0.00	0.00	0.00
5	Rye		0.00	0.00	0.00	0.00	Variable	0.00	0.00	0.00
6	Buckwheat		0.00	0.00	0.00	0.00	Variable	0.00	0.00	0.00
7	Barley		0.00	0.00	0.00	0.00	Variable	0.00	0.00	0.00
8	Cat food 40%	0.01	0.00	0.00	0.03	0.00	Fixed	0.00	0.00	0.00
9	Laver Premix	4	0.00	0.00	10.00	0.00	Fixed	0.00	0.00	0.00
10	Salt	0.5	2.50	0.00	1.25	0.00	Fixed	0.00	0.00	3.13
11	Oyster Shell	0.5	0.60	0.00	1.25	0.00	Fixed	0.20	0.00	0.75
12	Pierre à Chaux 38%	1	0.00	0.00	2.50	0.00	Fixed	0.00	0.00	0.00
		100		20.00	250.00	3.93	Kcal/g	0.20	5.57	99.33
Total Variable Ingredients =		93.99 % - A			Target Feed Size(kg)		Likely No of Bags			Choose CP Sources
Total Fixed Ingredients =		6.01 % - B			250.00		5.00			Peas
Total Fixed Ingredients Pr+ =		0.004 % - C								
Target Pr+ given as =		20								
Target Pr+ Minus "C" =		19.996				Cost (Naira)	99.33	0	0	

No price per ka ?

If 93.99 % variable ingredients contribute 19.996 % CP, it implies:

100% variable ingredients will contain/contribute: $\frac{19.996}{93.99} \times 100$

= 21.27 % CP



The quantity of Maize = $\frac{1.73}{14.00} \times 93.99 = 11.58$

The quantity of Peas = $\frac{12.27}{14.00} \times 93.99 = 82.41$

	=		x	=	
	=		x	=	0.00
	=		x	=	0.00
	=		x	=	6.01
	=		x	=	100.00 %

IMPORTANT NOTES:

- Two ingredients whose individual CP content are less than the desired level(or target) for the ration, are NEVER used. At least one of the sources of nutrients must have its protein level above the target level for the ration.
- Plant proteins are always mixed in with animal protein sources to meet the Amino acid balance (e.g. GNC + FM + BLM must go into mixture in the ration at a ratio of 4:1:1)
- In a situation where 2 ingredients contain the same proportion of CP, one has to decide on the ratio of the ingredients to use(e.g. 4:1 for GNC and FM)
- When the CP sources are more than ONE it is the % of mixtures that has to be used.

A short video demonstration for use of these new features will be put on my Youtube channel at:
<http://www.youtube.com/TKSolagbadeSDAc>

Below, I provide a quick guide for using the EXTENDED features...DATE ADDED:
 20th January 2013

FREE UPGRADE VERSION

1. Include 7 EXTRA feed ingredients in your rations.
2. Store 3 FORMULAS you derive for future recall/refinement
3. Export your stored formulas into a separate workbook!

Enter the currency you want the ration formula table
 COST cost columns to display HERE!

SDAc's (2013 Extended BASIC) Excel-VB Driven Ration Formulator for R.

Maize	Variable	11.57	Tgt Pr+(%)	19	Currency
Peas	Variable	70	Tgt Feed(kg)	250	\$ - US Dc
Layer Premix	Fixed	4	Refresh	Save	7 Extra Ingred!
Wheat	Variable	5	Print Preview Page		
Rye	Variable	0	Picture Type		
Buckwheat	Variable	3	Metafile		

Choose CP Sources		
Source Name	Ratio	Amnt
Peas	1	0.23
SoyaBean	3	1.32
Add new ir	0	0

Pearson Square Inputs	
Variable No. 1	Maize

Estimated % To Use In Ration			
The quantity of Maize	59.22		
The quantity of Mixture	35.27		
Quantity of Peas will be	8.819		
Quantity of SoyaBean Meal (SBM)	26.45		

SN	Ingredient Names	% In Ration	Price/Unit (Kg)	Pr% in ration	Amount(Kg) Std=50kg	kcal ME/g in ration	Type
1	Maize	11.57	3.30	1.04	28.93	0.39	Variable
2	Peas	70	0.00	16.10	175.00	0.00	Variable
3	Layer Premix	4	0.00	0.00	10.00	0.00	Fixed
4	Wheat	5	0.00	0.55	12.50	0.20	Variable
5	Rye	0	0.00	0.00	0.00	0.00	Variable
6	Buckwheat	3	0.00	0.30	7.50	0.00	Variable
7	Barley	0	0.00	0.00	0.00	0.00	Variable
8	Hullless Oats	0	0.00	0.00	0.00	0.00	Variable
9	Cat food 40%	0.93	0.00	0.37	2.33	0.00	Variable
10	Salt	0.5	2.50	0.00	1.25	0.00	Fixed
11	Oyster Shell	0	0.00	0.00	0.00	0.00	Fixed
12	Pierre à Chaux 38%	1	0.00	0.00	2.50	0.00	Fixed
13	Bone Meal (BM)	0	1.10	0.00	0.00	0.00	0
14	Vit/Min mix	0	68.00	0.68	0.00	0.00	0
15		0	0.00	0.00	0.00	0.00	0
16		0	0.00	0.00	0.00	0.00	0
17		0	0.00	0.00	0.00	0.00	0
18		0	0.00	0.00	0.00	0.00	0
19		0	0.00	0.00	0.00	0.00	0
		97		19.04	240.00	0.72	Kcal/kg

Add Up To 7 Extra Feed Ingredients

Choose the extra ingredients names from the drop menus and enter relevant data

Bone Meal (BM)	0	
Vit/Min mix	0	
0	0	0
0	0	0
0	0	0
0	0	0
0	0	0

Reload This Form To Start Over

CLICK HERE TO Close this form and THEN click "Use Automatic Form" to continue updates

Clicking the newly introduced DARK RED button (see left screenshot, next to "SAVE" button) labeled "7 Extra Ingred!" will load the smaller form shown above.

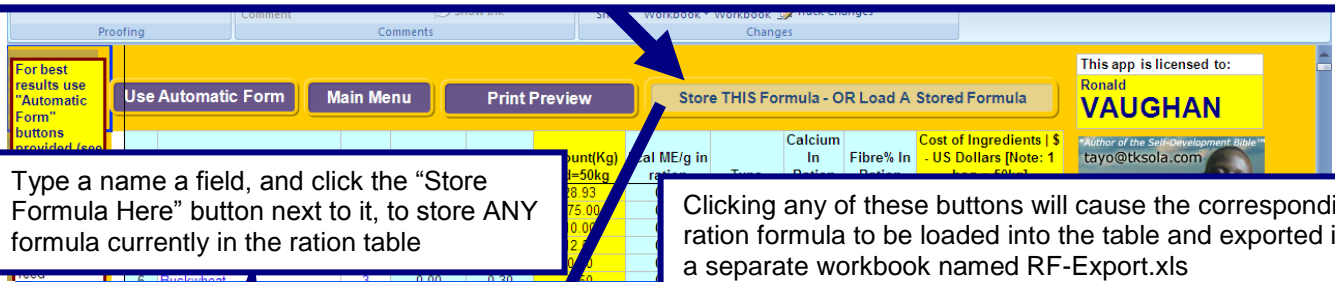
Using the above "Add Up To 7 Feed Ingredients" form, the user will be able to post additional entries for up to 7 feed ingredients. When you finish, close the form by clicking the red "X" in the top right, and you'll be taken back to the bigger form shown on the left, where your updates will appear.

Note the feed formulation table on the lower bottom of the screenshot on the left – which now shows a count of 19 rows as against 12 rows that were in the previous version of the basic Ration Formulator.

The drop menus in the extra ingredients form are updated from the Feed Ingredients table in the UPDATE SETTINGS interface.

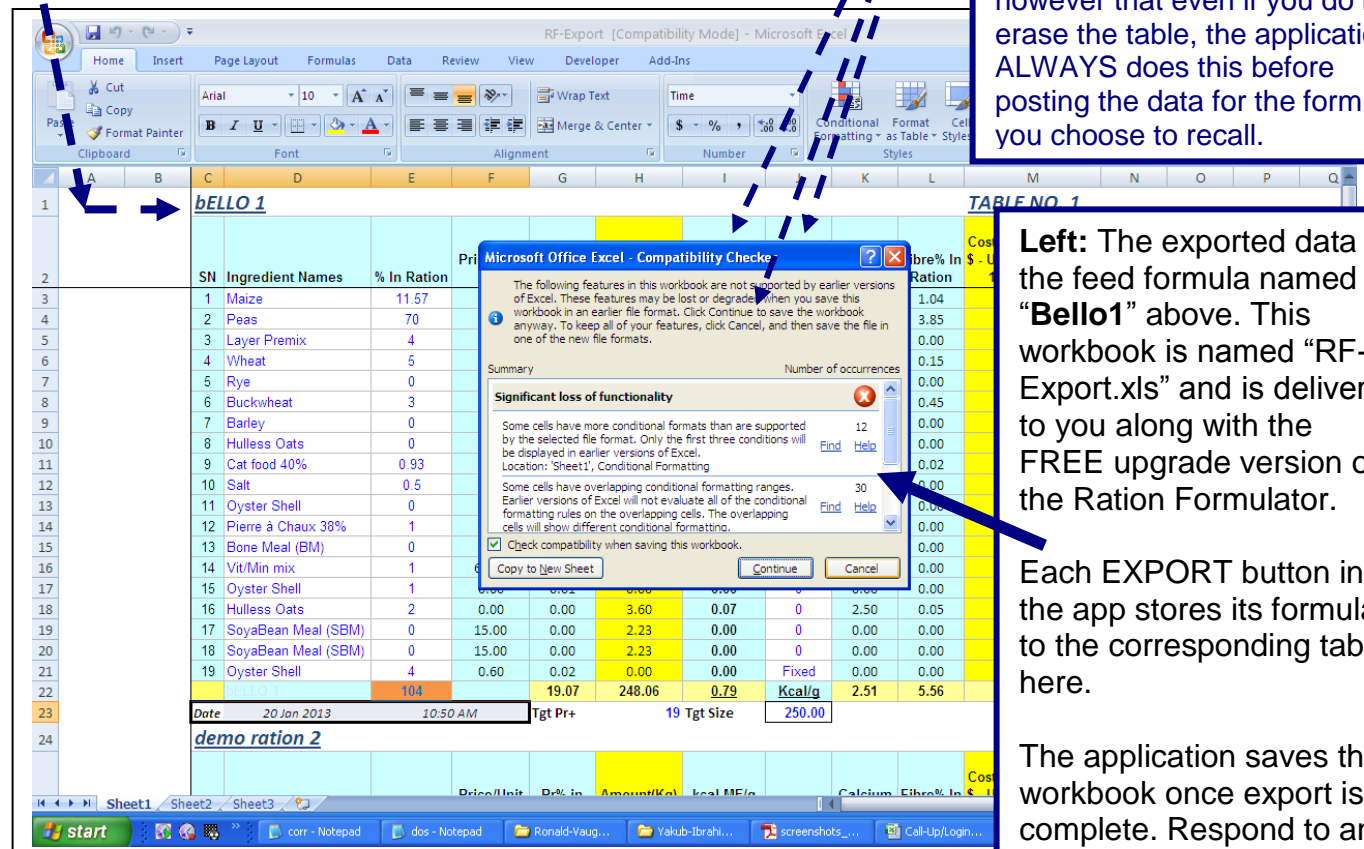
Make Microsoft Excel Do Everything You Want, And NOTHING You Don't

Click this button to load the **Store and Manager DERIVED Formulas Ration Interface** – see below ***IMPORTANT: I've emailed you the FIRST step you MUST perform for this to work!***



The **above** interface is quite intuitive. The buttons bear labels that reflect their functions. Just be sure to read and follows the prompts that appear. The formula storage feature is limited to three (3) formulas in this FREE Upgrade version.

Click this button to erase the data in these 3 fields in the ration table. You may wish to use this before loading a stored formula into the table. **Note** however that even if you do not erase the table, the application **ALWAYS** does this before posting the data for the formula you choose to recall.



Left: The exported data for the feed formula named **"Bello1"** above. This workbook is named **"RF-Export.xls"** and is delivered to you along with the FREE upgrade version of the Ration Formulator.

Each **EXPORT** button in the app stores its formula to the corresponding table here.

The application saves the workbook once export is complete. Respond to any prompt that appears.

In the PRO version, a drop menu driven floating form interface allows you to store and recall (as well as edit) your formulas in their thousands. See screenshots below.

For best results use "Automatic Form" buttons provided (see right):

Click in a cell and use the drop menu that appears to choose the ingredient you want to use in your ration. Editable text is BLUE in colour.

Enter "Target Pr+" in the cell, and enter "Target Feed Size (kg)". Editable text is BLUE in colour.

Click in a cell and use the

This app is licensed to: Ronald VAUGHAN
tayo@tksola.com

Tayo Solagbade
Performance Enhancement Specialist
Helping individuals & businesses

Store & Recall Multiple Formulas

Store Derived Formula

Enter New Formula Name

Store NEW Formula

Recall | Load | Export Stored Formula

Choose Formula Name Below

Demo formula 3

OK

Export To Table 1

Export To Table 2

Export To Table 3

Delete It

Edit It

Store Changes

TIP: Choose a formula & click the "OK" button to load into the table. The "OK" button "greys out" i.e. becomes disabled. Choose another formula & the "OK" button will be enabled. Just Rinse & Repeat :-))

No. 1 of 6

Reload this form

Erase TABLE

Save ALL!

Click this button to erase the data in these 3 fields in the ration table. You may wish to use this before loading a stored formula into the table. Note however that even if you do not erase the table, the application ALWAYS does this before posting the data for the formula you choose to recall.

Store & Recall Multiple Formulas

Store Derived Formula

Enter New Formula Name

Store NEW Formula

Recall | Load | Export Stored Formula

Choose Formula Name Below

Demo formula 3

OK

Export To Table 1

Export To Table 2

Export To Table 3

Delete It

Edit It

Store Changes

TIP: Choose a formula & click the "OK" button to load into the table. The "OK" button "greys out" i.e. becomes disabled. Choose another formula & the "OK" button will be enabled. Just Rinse & Repeat :-))

No. 1 of 6

Reload this form

Erase TABLE

Save ALL!

Important Notes

E.1 What NOT to do while using the application

- a. Do not leave ANY cell(s) in the data entry interfaces blank. If you do not wish to make an entry into a field, type a dash i.e. "-" into it.
- b. If at all possible, due to the size of the application and the demands it may place on your computer system's resources, avoid running more than one other application while using this program. This way you can ensure a more satisfactory application performance – and user experience.

E.2 What NOT to do when a command button is executing a procedure

- a. Do not click the mouse or press a key on the keyboard while the program is SAVING.

E.3 What TO DO whenever you use the application

- a. Always ensure every cell has an entry - "dash" where you have no data to input.
- b. Always click the Save NOW button to retain your newly added data permanently.

E.4 Troubleshooting tips - Questions and Answers

If you have never run an Excel Visual Basic driven spreadsheet application on your PC's copy of Microsoft Excel, it is likely to return an error(message) when you open the file. The following instructions will guide you to prepare your copy of Excel to allow problem-free running of our applications.

ONE COMMON PROBLEM: My experience in working with users has shown that most people use MS Excel on their PCs for which the VBA(Visual Basic for Applications) module has NOT been installed - or NOT installed fully/correctly. Based on this I strongly advise that you have your copy of MS Excel re-installed in "FULL or COMPLETE installation" mode.

IF YOU GET A "COMIPLE ERROR" MESSAGE - CHECK YOUR EXCEL VERSION...

Also, depending on the VERSION of Excel on your PC, you might get a "Compile Error" message when you open some of my fully automated workbooks(which were created using MS Excel 2003) on lower versions of Excel . I am currently working on modifying code to allow such apps to run from MS Excel 2000 and above. You can contact me if you get such an error message.

USE THE TROUBLESHOOTING GUIDE BELOW

Do the above BEFORE you try running our applications. If you then encounter any problem, follow the troubleshooting guide provided below

- 1) Default Macro security setting in your copy of Excel is likely to be minimum of "High" which will cause applications like ours to be automatically disabled. You can use the following procedure to enable the macro: **Close** the file and any other instances of the application currently running on the computer. **Select** the Tools menu option and then select Macro and Security. In the resulting Security dialog, set the security level to Medium by clicking the Medium radio button.
- 2) Close the file and any other instances of the application currently running on the computer. Open the Automated Ration Formulator™ application again and click the Enable Macros button when prompted to allow for the unsigned macro to run.

About The Author

Tayo Solagbade is a Performance Improvement Specialist and multipreneur. He works with individuals/businesses who want to achieve highly profitable outcomes, and with parents who want to raise real-world competent children.

He earns multiple streams of income by providing clients with performance improvement training and coaching, custom MS Excel-VB solutions, web marketing systems development, freelance writing services, and best practice extension support services (for farm business owners).

Since 2002, he has worked closely with clients in a wide range of industries such as e.g. health and fitness, healthcare delivery, real estate, interior design, hospitality (hotels, restaurants, bars), consulting, NGOs, farm business, hearing & speech therapy, travel and tours, printing and others. Before launching his new SD Nuggets blog in June 2012, Tayo published a **monthly** Self-Development Digest newsletter from June 2006 till 2012. (See www.tayosolagbade.com/news/sdacn_current.htm)

The SD Nuggets blog has since replaced that newsletter. He now publishes ONE new post per day from Monday to Saturday (and sometimes Sunday) on the SD Nuggets blog – sometimes while serving clients online **and** off the net.

Tayo has published over 300 articles on his website. Over 170 appear on Ezinearticles.com, and as part of a back links building strategy, his Farm

Business guest posts now appear on www.africabusinesscommunities.com.

He is the author of the Self-Development Bible™, the popular Practical Livestock Feed Formulation Handbook and **nine other PDF reports which can be downloaded FREE** from

www.tayosolagbade.com.

When he's not amazing clients with his superhuman skills (wink), Tayo works as the creative force behind his multidisciplinary Self-Development (SD) Nuggets™ blog at and the Public Speaking IDEAS newsletter (See **page 25** for links). Since September 2011, he has published the latter weekly, to promote **Burt Dubin's** Public Speaker Mentoring service to experts working across the African continent.

Tayo Solagbade believes that development of a positive mindset, mental stamina, and visualization are the most crucial elements required for any person(s) to achieve success in any areas of human endeavour.

In a previous life, Tayo worked as a high performing manager in Guinness Nigeria Plc. You can read details in the box below.

For a limited time, Tayo is available to speak to your group or organization for a moderate fee. Send e-mail to tayo@tksola.com, or call 234-803-302-1263.

Visit www.tksola.com to learn more about Tayo's on-demand learning events.

In a previous life... Tayo Solagbade worked for a few months as Trainee Sales Coordinator in a Wine Manufacturing company, before joining Guinness Nigeria as Graduate Trainee in October 1994.

Between 1996 and 2000, he got recognized for using self-taught skills, in his spare time, to develop automated spreadsheet report generation programs in his department (Over 95% savings in report generation times were recorded). Over four of his applications were adopted for brewery reporting.

After being seconded – twice - in 1998, to act as Training and Technical Development Manager (the first time for 1 month, the second for over 3 months), Tayo was promoted Training and Technical Development Manager (TTDM) in September 2000. About the same time, he was nominated to attend a 6 week International Brewing Course in the United Kingdom. Four months after returning from the UK, and resuming as TTDM, he was nominated to act as for a five-week period.

Before voluntarily resigning his appointment in December 2001 to pursue a long standing self-employment dream, Tayo successfully acted in other Senior Management roles as Production Manager, and Technical Manager. He was also trained - and functioned - as a workplace Coaching Conversations Facilitator and Best Practice Process Management Champion.

Tayo holds a B.Sc degree in Agricultural Extension Services from the University of Ibadan having graduated top of his class - with Second Class Upper Division honors - in 1992. He is an Associate Member of the UK Institute & Guild of Brewing, a 1997 National Finalist of the Nigerian Institute of Management's(NIM) Young Managers' competition, a Certified Psychometric Test Administrator for Psytech UK, innovator of Spontaneous Coaching for Self-Development™(SCfS-D™), and Founder of the Self-Development Academy (www.tayosolagbade.com).

"Tayo, I honestly believe you are one of those who will succeed at anything he does. Your commitment and effort has been outstanding....Thanks for all your hard work since I've been here - you will be sorely missed. I don't need to wish you good luck, you have the ability to make your own luck. - Andy"(R. Jones)*

**Operations Manager, Guinness Nigeria Plc Benin Brewery, December 2001 (Handwritten comments in farewell/xmas cards sent to Tayo Solagbade following his resignation to start his own business).*

TAYO SOLAGBADE AS A MULTIPRENEUR

In order to effectively meet the needs of the various groups he works with, Tayo functions as a multipreneur, using himself as a guinea pig of sorts to explore, discover and document best practice ways of successfully venturing into various areas of endeavour. His primary focus in this regard, is however on employee career development and micro/small business(low-capital startup) entrepreneurship.

For instance, depending on the opportunities that appear in the market place, Tayo earns multiple streams of income in the following ways: 1). Providing professional web design and copy writing services (and coaching). 2). Delivering Pre-programmed Spreadsheet Solutions - and also providing Experiential Coaching in Excel and Excel Visual Basic. 3). Building custom natural self-cleaning aquarium systems as teaching and learning aids for educational institutions, hospitals, offices & homes. 4). Providing customisable Talks, Seminars, Coaching programs on Self-Development, Performance Enhancement, and Best Practice Systems Development. – all of these he does using self-taught skills acquired out of necessity during periods when he struggled to earn steady income from his primary business interest – Self-Development Education.

In the future, Tayo(a graduate of Agricultural Extension Services from the University of Ibadan) intends to establish an Integrated Catfish and Ornamental Fish Farm as a Farm Research/ Extension Advisory Services Center. One key objective of the Integrated Fish Farm (IFF) will be to continuously investigate, and document best practice ways of rearing farm fish cost-effectively for higher yields using locally sourced materials and indigenous knowledge/skills – in conjunction with consistent implementation of Best Practice Process Management Techniques.

The IFF's findings will then be offered to interested startups and existing fish farm business owners via workshops and seminars designed to encourage more people to go into low startup capital ventures like fish farming by followed tested and proven methods(process records documentation/ spreadsheet data analysis for decision making, workplace organization etc) which increase their chances of success at first attempt. Visit <http://www.iff.tayosolagbade.com> to learn more.

Tayo believes that educating individuals about how to empower themselves to achieve ANY goals they desire, will inspire them to stop waiting for an enabling environment to be "created" and instead take personal action to create the future they want.

Below are three(3) of Tayo's Favorite Quotes – and SDAc's tagline.....

"The illiterate of the 21st Century will not be those who cannot read or write. They will be those who cannot learn, un-learn and re-learn" – **Alain Tofle**

"..the biggest challenge facing most African nations is to creatively adapt ideas to their unique environment." - **Mr. Patrick Boateng, Adviser for Africa, US Federal Communications Commission (FCC) at the African Internet Summit and Exhibition (AFRINET) 2002, held in Abuja, Nigeria.**

"I want to be part of a South Africa and Africa sending out a new message to the world, of taking responsibility for our own challenges. The world has got used to a picture of Africa asking for support, with cupped hands. It's time we create a new image of Africa. It's time that we ourselves start giving and assert our sense of dignity. We deserve respect. It is time we stop apologizing for ourselves and acknowledge our achievements". - **Graça Machel -Mandela**

TK SOLAGBADE

Tayo K. Solagbade

Self-Development/Performance Improvement Specialist

Mobile: 234-803-302-1263

Email: tayo@tksola.com

www.tayosolagbade.com (Information & Education)

www.tayosolagbade.com/sdnuggets (Self-Development Nuggets™ blog)

<http://tayosolagbade.com/sdnuggets/category/public-speaking/> (Speaking IDEAS Blog)

www.excelheaven.tayosolagbade.com or www.excelheaven.biz (MS Excel Automation)

<http://www.iff.tayosolagbade.com> or www.boostyourfarmprofits.biz (Farm Biz Ideas)

www.lulu.com/sdaproducts (Online Books Store)

www.cafepress.com/sdaproducts (Eyo Masquerade Gifts Store)



www.twitter.com/tksola



www.facebook.com/tayo.solagbade



<http://www.youtube.com/TKSolagbadeSDAc>



<https://plus.google.com/u/0/117041728654417267212/about>

Platinum Quality Author at the Ezine Articles Directory:

http://ezinearticles.com/?expert=Tayo_Solagbade

1. PUBLISH YOUR BOOK AT ZERO COST

As an expert in your field, you would greatly boost your market place credibility by writing & publishing one or more book(s) sharing your knowledge and insights about your area of expertise. There is an internationally proven way to do this AT ZERO COST. I discovered how in 2005. Today, my books can be purchased in hard copy at www.lulu.com/sdapproducts .
(NB: I also offer a book writing service. Call 234-803-302-1263):

"Infact, there is the greater likelihood of the success of export drive involving our cultural products and talents than one involving our outstandingly shoddy manufactures and primary produce nobody wants. The only problem is : our writers and artistes have to think like business (people). They have to learn to study the international marketplace and woo it with skill & subtlety" - Sina Odugbemi (SOURCE: Article titled "Why Writers Are Poor (part 2)". Subtitle: "A critical look at the economic status of writers in the contemporary society" - published in Newswatch magazine, January 2, 1989 page 38

2. ORDER A WEB MARKETING SYSTEM

I help clients develop and implement custom web marketing systems to make their websites get found by potential clients without their having to spend ANY money. Click the link below to view a PDF flyer (wms_talk_offer.pdf) I use to introduce and explain key benefits a Web Marketing System can deliver to its owner - IF well conceived and implemented.

http://tayosolagbade.com/uploads/wms_talk_offer.pdf

"Unless the person running your marketing is patient, it will be difficult to practice commitment. View marketing as an investment, be consistent, and make prospects confident. Patience is a guerrilla virtue." - Jay Conrad Levinson in "The 15 Secrets of Guerrilla Marketing" - <http://www.gmarketingcoach.com>

3. BUILT-IN EXCEL SOLUTIONS DEVELOPMENT

Self-Development Academy's Excel Heaven™ is the FIRST provider of Preprogrammed and Custom Spreadsheet based solutions in Nigeria. We offer Workbook Auditing/Optimisation and VBA Automation; Custom Spreadsheet Software Development; Sales; Job-Based Spreadsheet Coaching; and Consulting/Advisory Services on effective application of spreadsheets for business use. **Call 234-803-302-1263.** See video demos at

<http://www.youtube.com/user/TKSolagbadeSDAc>

Visit our Excel Heaven mini-site at : <http://www.excelheaven.tayosolagbade.com>

4. COST-SAVING FARM BUSINESS (BEST PRACTICE) SUPPORT SERVICES

SDAc's Cost-Saving Farm Business Ideas mini site offers custom best practice farm management systems (and software) development at affordable rates to farm business owners in Nigeria/Africa. Ours is a new, unconventional, but practical approach to provision of Modern Extension Services for farm businesses in this part of the world.

We work with crop and/or livestock farmers to develop and implement intelligent decision making systems that help their farm businesses become more efficient and profitable, through low cost adaptation of technology, while building on indigenous knowledge systems.

Visit our mini-site at : <http://www.iff.tayosolagbade.com>